



CHRISTINE ZALEWSKI



2010 Licensed by: Out of the Blue

CHRISTINE ZALEWSKI

Photographer Christine Zalewski's delicate hand and artist's eye fuse together to create exquisitely beautiful floral portraits that range from ethereal to intense. An accidental gardener, Christine grows many species of plants and flowers to ensure she has a never-ending supply of subject matter & inspiration. Fascinated with light, color, and form, she photographs each of her botanical specimens as portraiture. The final images range from those using classic photographic techniques to intricate collages incorporating her beautifully hued watercolor paintings. Images range from sepia tones, intensely hued flowers on hand painted backgrounds, to high key images that look as if they are lit from within. Her photographs are licensed both nationally and internationally for fine art prints, greeting cards, journal illustration, and home decor products.

Artist's Statement

“My sole intention is to capture the fleeting beauty of the interaction between the striking forms offered by life and the light that illuminates them. This ever changing play between light and life is the basis for all my work. If I can capture these moments and print them in a manner that both preserves their beauty and offers the momentary experience to others, I am satisfied.”



ZAL001 - Red Poppy I



ZAL002 - Red Poppy II



ZAL003 - Poppy Reflection I



ZAL004 - Poppy Reflection II



CHRISTINE ZALEWSKI



ZAL005 - Tulips Left



ZAL006 - Tulips Right



ZAL007 - Violet Tulip Border I



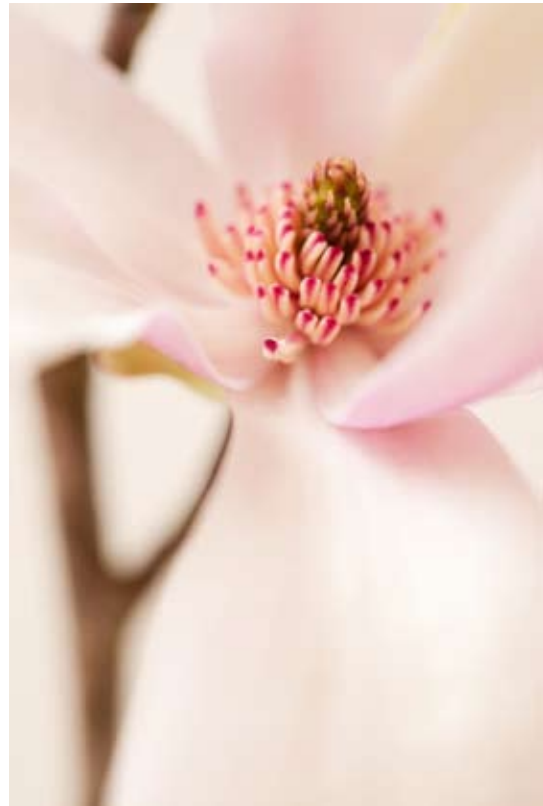
ZAL008- Violet Tulip Border II



CHRISTINE ZALEWSKI



ZAL009 - Pink Serenity I



ZAL010 - Pink Serenity II



ZAL011 - White Floral on Blue I



ZAL012 - White Floral on Blue II



CHRISTINE ZALEWSKI



ZAL023 - vintage red tulip I



ZAL024 - vintage red tulip II



ZAL013 - Peaceful Florals I



ZAL014 - Peaceful Florals II



CHRISTINE ZALEWSKI



ZAL015 - Zen I



ZAL016 - Zen II



ZAL017 - Leaves I



ZAL018 - Leaves II



CHRISTINE ZALEWSKI



ZAL019 - fall leaves



ZAL020 - fall leaves II



ZAL021 - sepia peony I



ZAL022 - sepia peony II